

Consistently Reduce Barrel Heating Cost by an Average of 40%

Reduced Operating Costs

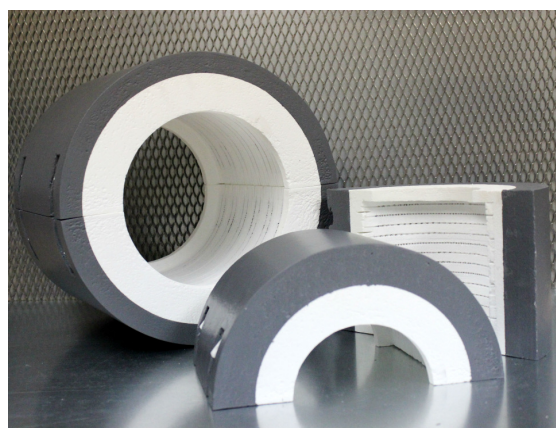
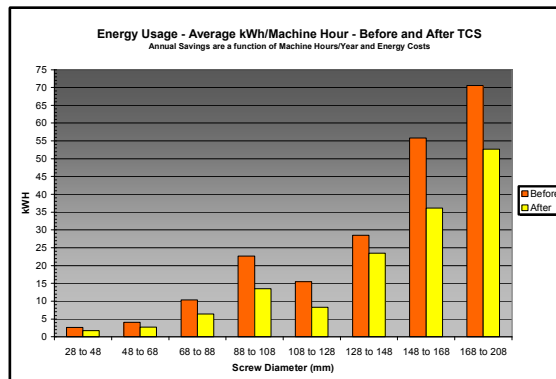
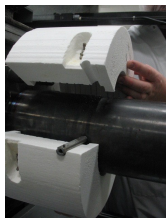
- Reduces both Barrel Heater Energy Consumption and Air Conditioning Load in Climate Controlled Spaces
- Additional Cost Savings:
 - ⇒ TCS Heater Life estimated at more than 2x Band Heaters
 - ⇒ Lower Maintenance
 - ⇒ No Band Tightening Required
 - ⇒ Traditional Band Heaters are Particularly Inefficient when they Lose Contact with Barrel, and this is Rarely Detected

Improved Operator Safety & Comfort

- Insulated Encapsulation Directs Heat to the Barrel, Resulting in an Exterior which is Cool to the Touch improving both Worker Safety and Comfort

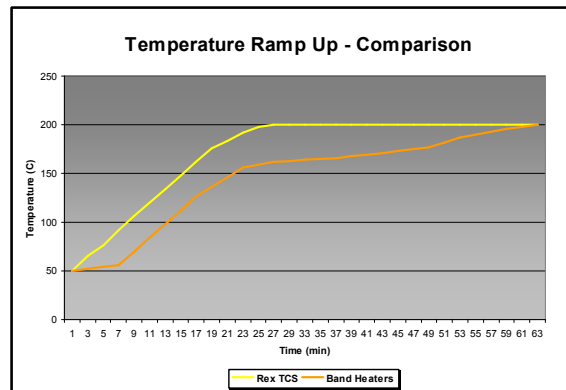
Low Risk

- Low Investment with an ROI Typically < 2 Years
- Easy Installation
- TCS Employs Existing Controls
 - ⇒ No Controller Change; TCS Employs Existing Wiring, SSRs, Fuses, and Contacts
- TCS is Specified as OEM Equipment by Companies such as Toshiba and Milacron
- Proven Manufacturing Process from a Reputable Company with over 50 years of Experience



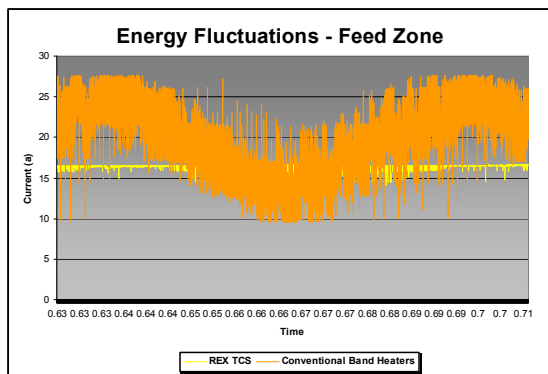
Improved Machine Utilization

- Barrel Reaches Operating Temperature >50% Faster with TCS



Quality—Improved Process Consistency

- Quicker Response Time & More Efficient Energy Transfer to the Melt to Substantially Reduce Temperature Fluctuations



Technical, Sales, and Distribution Inquiries Contact

TCS_Technical_Service@rexmaterials.com

Company: _____

ACME Plastic Company

Machine Manufacturer: _____

Milacron

Tonnage: _____

850T

Machine ID Number: _____

18A

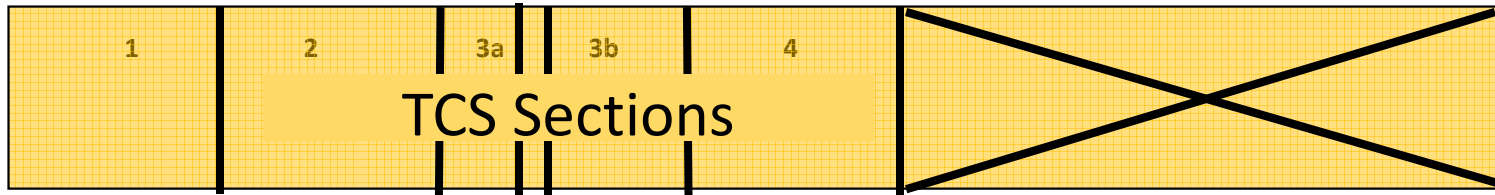
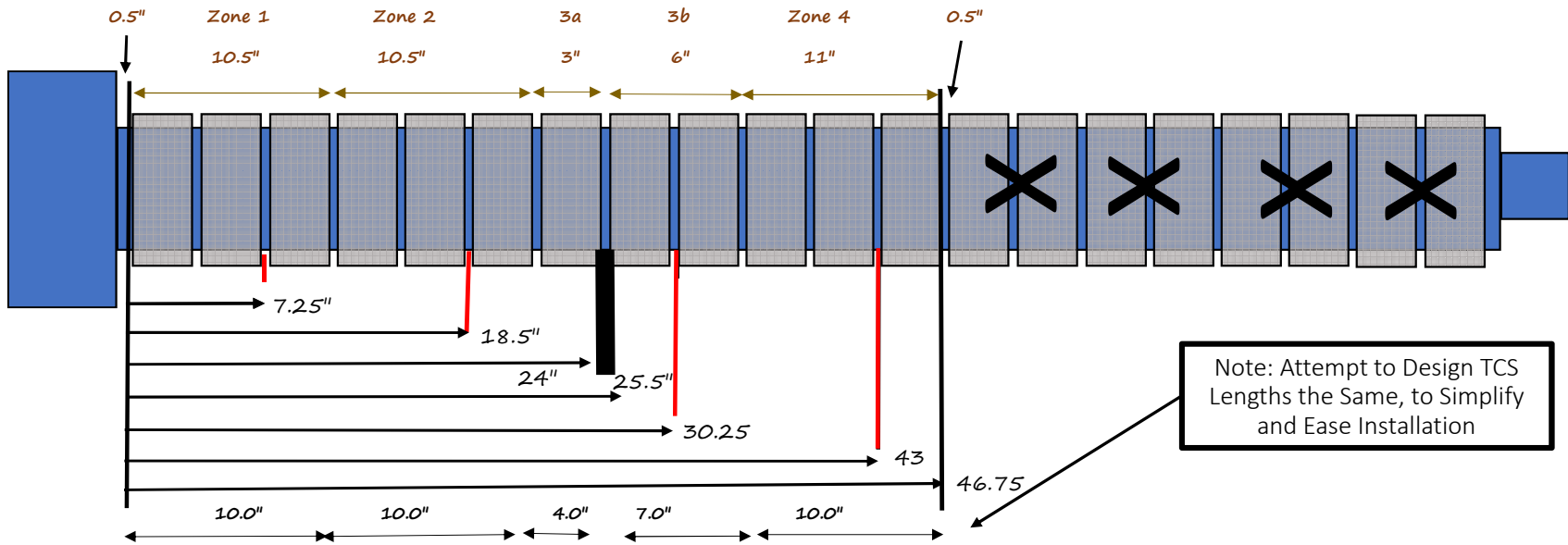
Sketch Current Heater/Thermocouple Arrangement Identifying:

- * Thermocouple Locations - Shown Below in Red as: |
- * Zones
- * Interference - Such as Barrel Supports - Shown Below as: █
- * Any Hardware or Structure within 3.25" of the Barrel Interference - Such as Barrel Supports.

- * When Specifying TCS Lengths, allow a 0.25" of space between TCS and adjacent structures such as the feed block.
- * Zones split by Interference such as a Barrel Support should be defined separately.



Rex Materials Group
Ken Van Nimwegen
Global Sales Manager - TCS
404-558-1653
kvan@rexmaterials.com



Zone #	1	2	3a	3b	4			
Power Rating of all Heaters in Zone (kW)	3.6	3.6	1.8	1.8	3.6			
% On-Time of the Heaters in Zone	33%	21%	18%	18%	11%			
Zone Length	10.0"	10.0"	4.0"	7.0"	10.0"			
Barrel Outside Diameter	9.25	9.25	9.25	9.25	9.25			
Supply Voltage to Heaters	230V	230V	230V	230V	230V			

